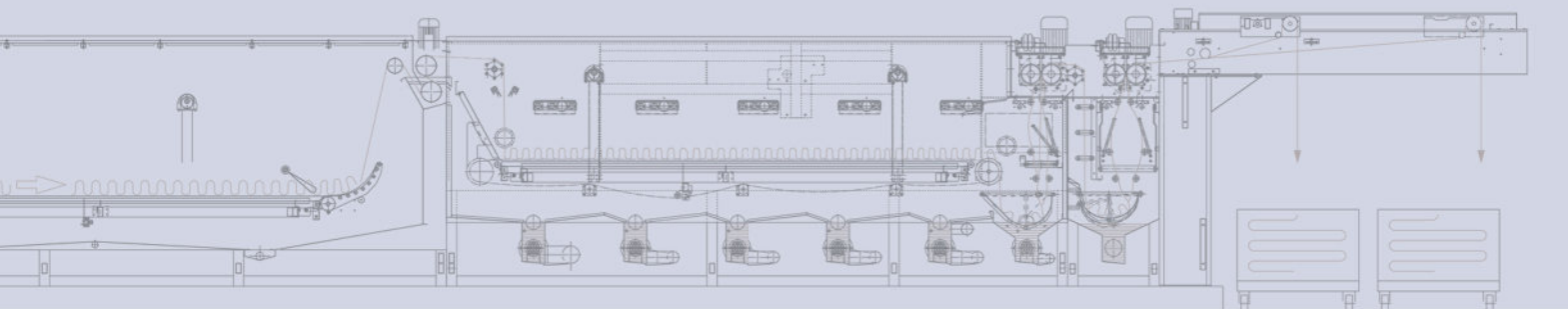




# **GALAXY**

## **TUBULAR WET FINISHING**

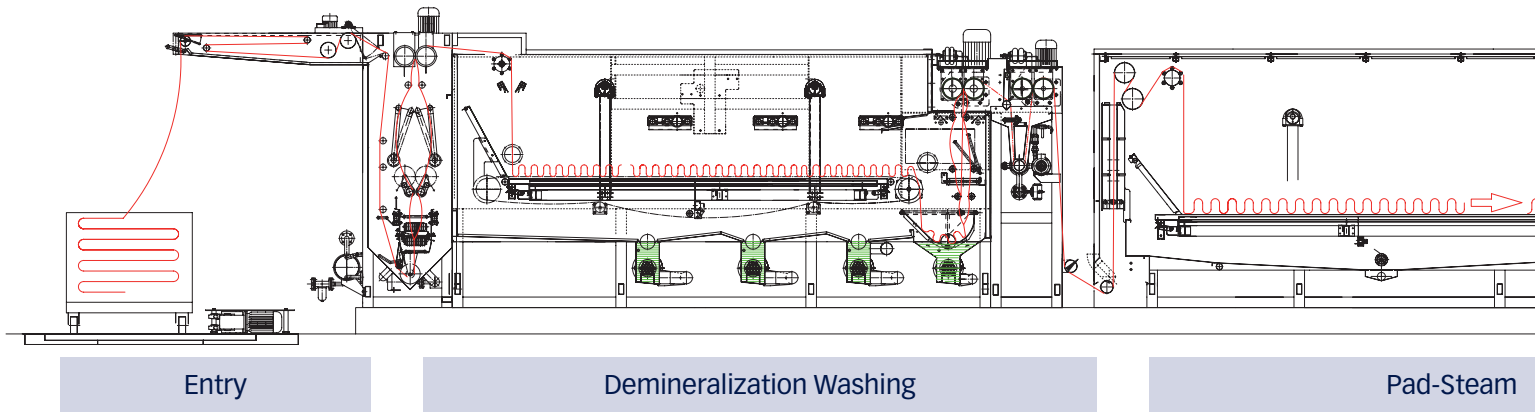


## ADVANTAGES

- Shiny product surface – no pilling
- Low water, steam, and power consumption
- Tensionless processing
- Excellent results and reproducibility
- No crease marks

Over 30 years of development, the GALAXY has combined excellent Pad-Steam bleaching and washing results, offering high productivity and low water, energy, and chemical consumption.

The modular design allows to meet the optimal configuration and production for each customer, from 500 to 1.000 kg/h



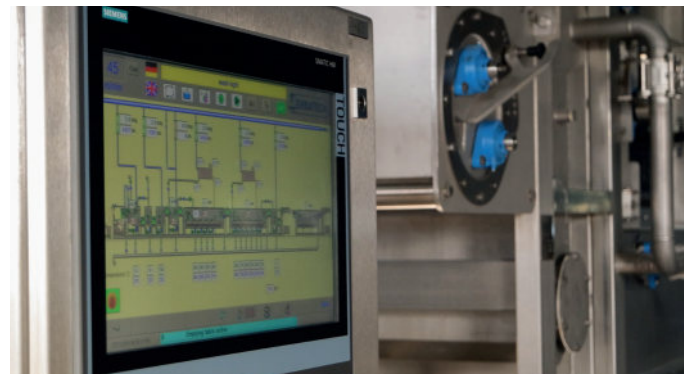
## HEAT RECOVERY SYSTEM

The compact heat recovery is used to heat fresh water flowing into the machine by means of waste heat.

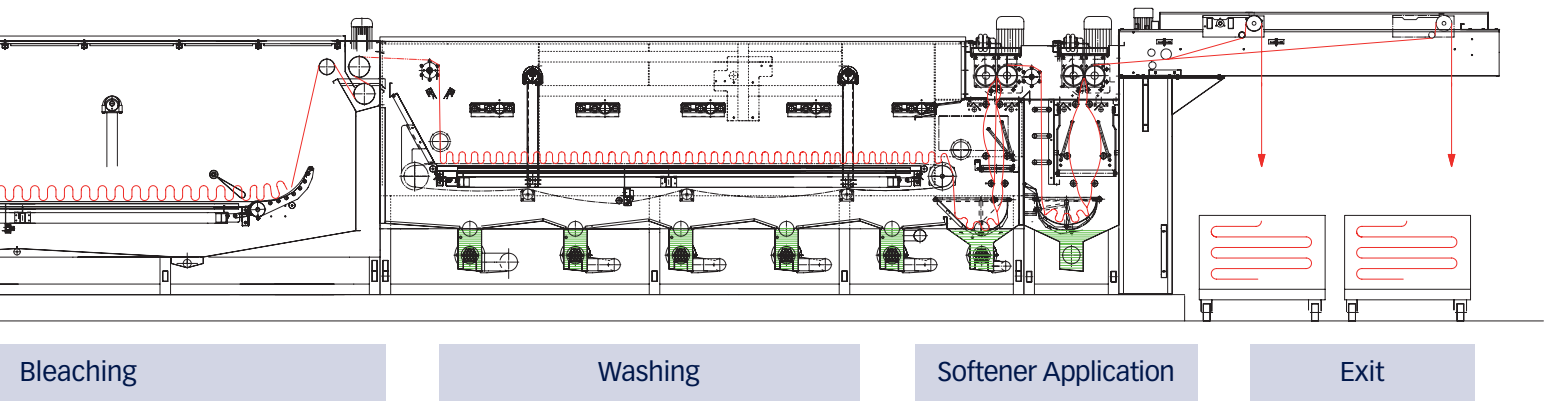
The system is integrated into the machine, and energy saving data is collected by the process control.

## PROCESS CONTROL

The SIEMENS based process control allows for the exact reproducibility of all processes, recipe management, and consumption data collection for the state-of-the-art textile factory. The intuitive visualisation and controls make the operation of our ranges very easy, and reduces learning time. Online diagnosis and support is standard equipment.







## DOSING UNITS

Dosing units are supplied according to the recipe's needs. Each chemical is dosed into the machine separately, with an independent pump providing the exact amount required for the process, also allowing to track consumption. Easy to use and calibrate, the dosing rounds up for a fully automatic textile solution.



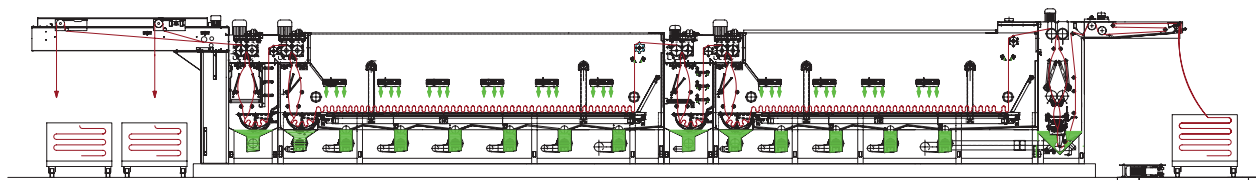
## FILTERS

The low resistance filters are based on a self-cleaning and no-maintenance stainless steel mesh. They can be equipped to eliminate lint and dirt to any washing compartment.

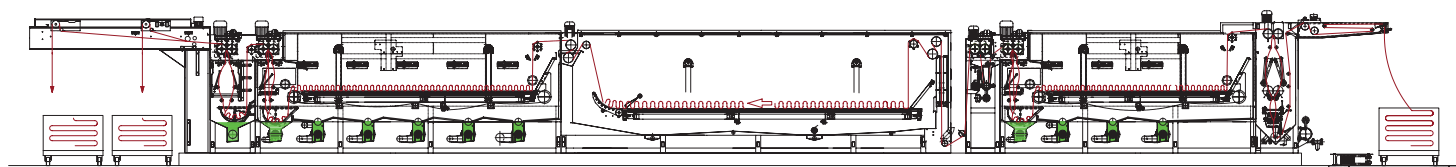
Please ask our sales team for advice.



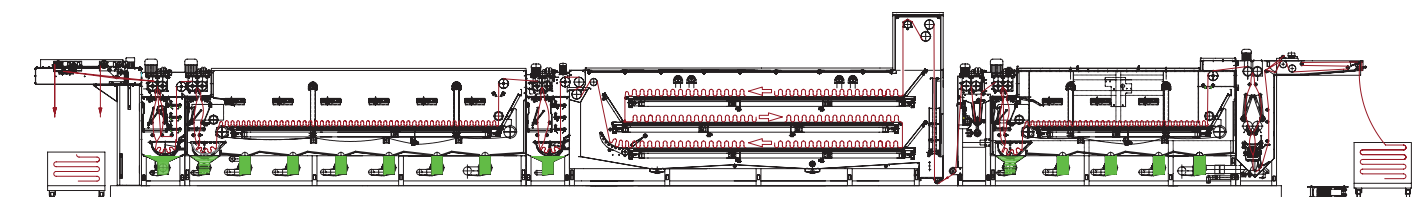
## TUBOLAVAR 1000



## GALAXY 500



## GALAXY 1000



## INLINE OBA FOR FULL WHITE BLEACHING

