

Platinum Gull-Wing StableSizer

Specifications

TOTAL ELECTRICAL

22 KVA (Max) 460VAC, 60 Hz, 3 Ph
5 KVA 230VAC, 60 Hz, 1 Ph (Heaters)

MOTORS

(7) 2 HP Entry Roll
Edge Drive
Feed Roll
Retard Roll
Folder Conveyor
Folder Traversing Roll
Folder Drop Table
(1) 1/2 HP Spreader Width

STEAM

Saturated Steam Consumption:
350 lbs/Hr @ 70-100 PSIG (482-689 kPa)
(159 kg/Hr @ 655-784 kPa Absolute
@ 158°C-170°C)

AIR

80 PSIG Air Pressure (552 kPa)

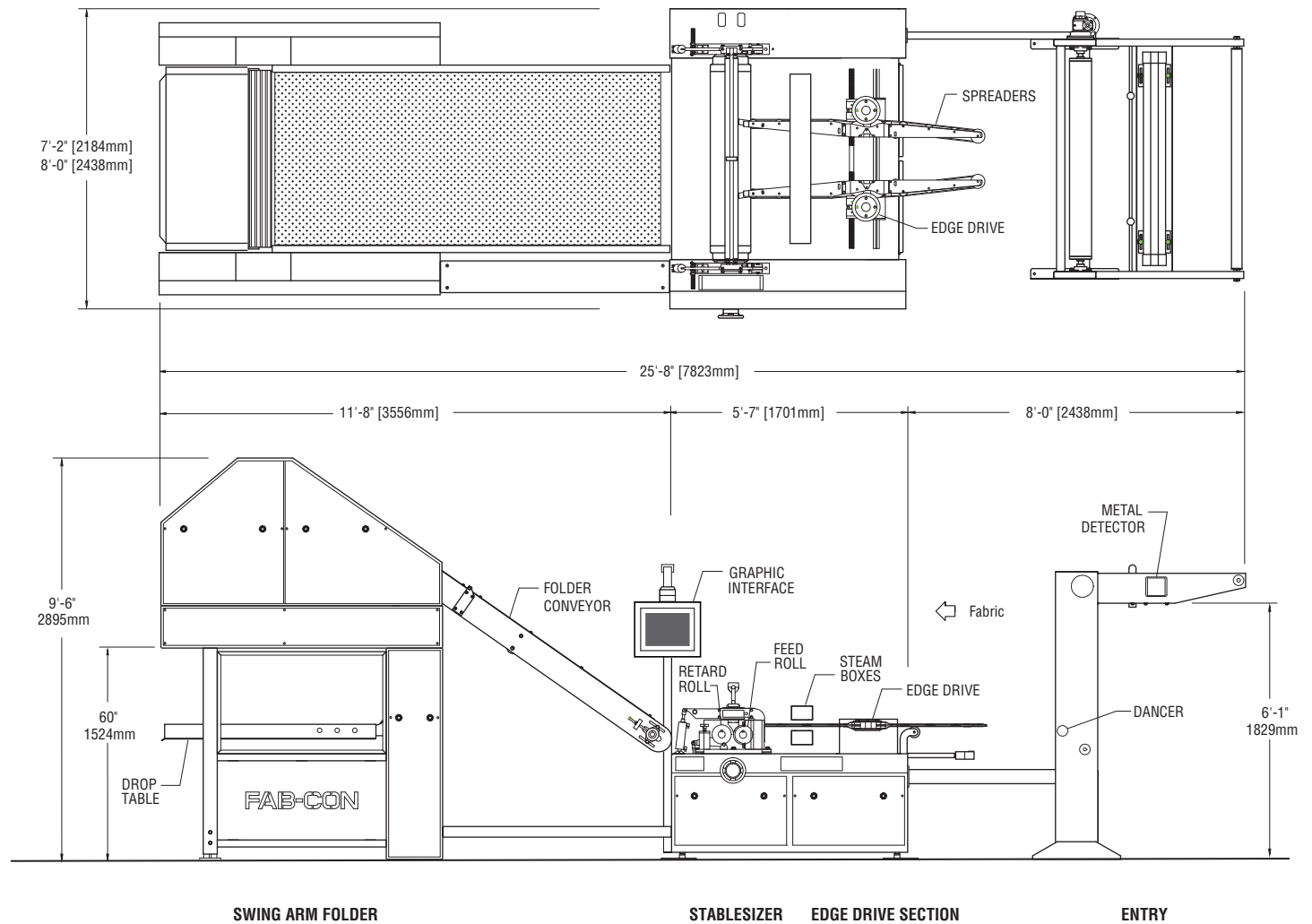
SPEED RANGE

0-75 YPM (0-68 m/m)

OPERATING WIDTH

50" Model: 7'-47" (177mm - 1193mm)

60" Model: 7'-57" (177mm - 1447mm)



Patents issued and applied for worldwide



P.O. BOX 591
75 CHANNEL DRIVE
PORT WASHINGTON, NY 11050-2216 USA
PHONE (00)1-516-883-3999
FAX (00)1-516-883-3880
E-MAIL: info@fab-con.com

Design and specifications are subject to change without notice.

REVISED 1/2019