

738/1050 Hydro-Sizer

Specifications

TOTAL ELECTRICAL

738 Model:
20 KVA (Max) 460VAC, 60 HZ, 3Ph
1050 Model:
24 KVA (Max) 460VAC, 60 HZ, 3Ph

AIR

80 PSIG Air Pressure (552 kPa)

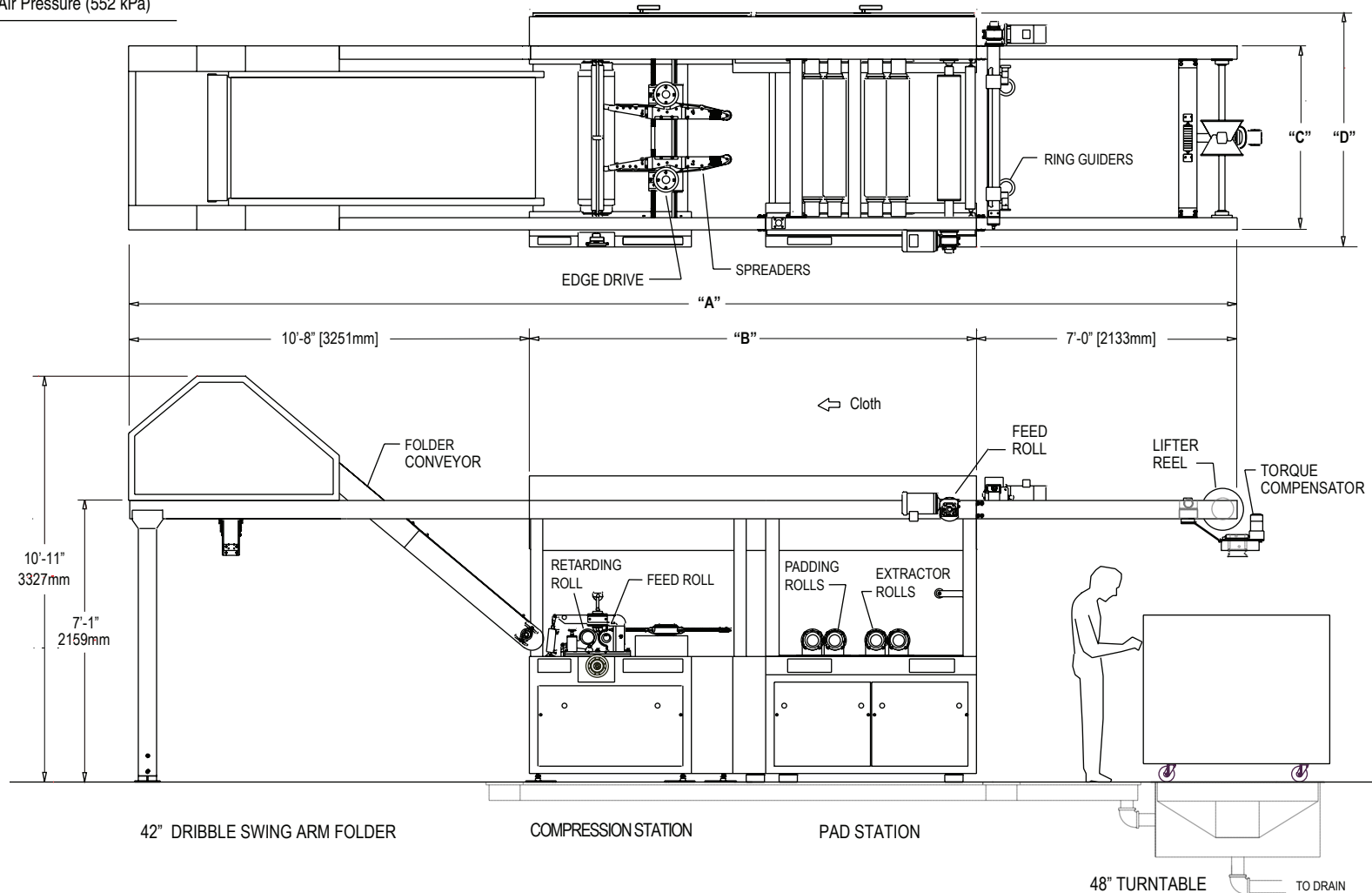
SPEED RANGE

0-90 YPM (0-82 m/m)

OPERATING WIDTH

738 Model: 7'-36" (177mm - 914mm)
1050 Model: 7'-46" (177mm - 1168mm)

MACHINE MODEL	"A"	"B"	"C"	"D"
738 Hydro-Sizer	29'-8" [9042mm]	12'-0" [3657mm]	4'-11" [1498mm]	6'-3" [1905mm]
1050 Hydro-Sizer	30'-2" [9194mm]	12'-6" [3810mm]	5'-8" [1727mm]	7'-6" [2285mm]



Patents Issued and Applied for Worldwide



P.O. BOX 591
75 CHANNEL DRIVE
PORT WASHINGTON, NY 11050-2216
PHONE (00)1-516-883-3999
FAX (00)1-516-883-3880
E-MAIL: info@fab-con.com

Design and specifications are subject to change without notice.