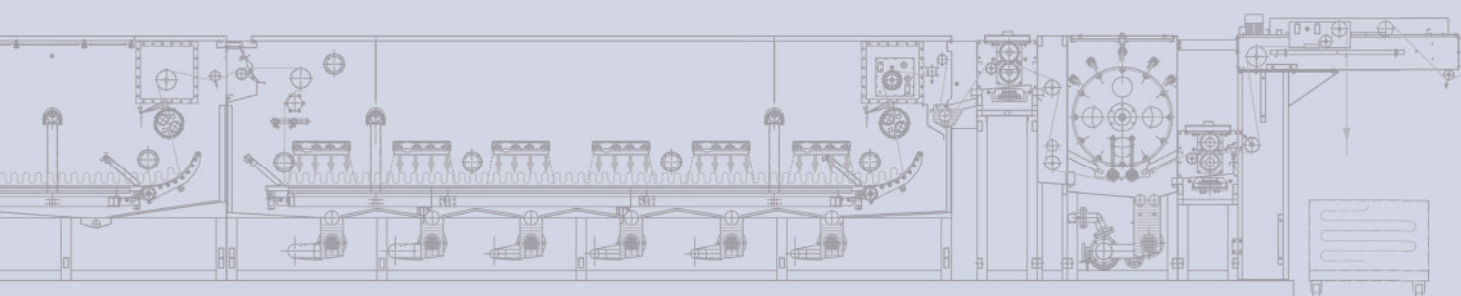




SCOUT

OPEN-WIDTH WET FINISHING

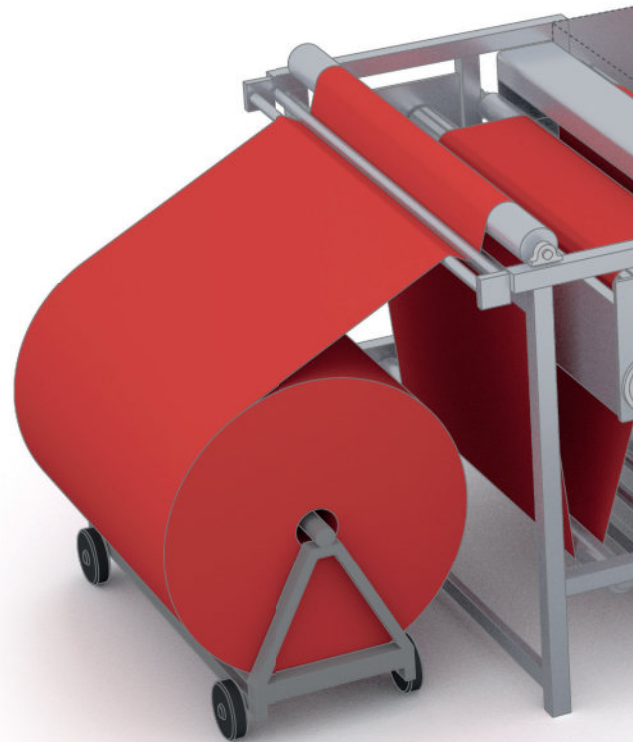


SCOUT WET FINISHING RANGES FOR KNITS AND WOVENS

With over 500 SCOUT continuous ranges around the world, we have proven its flexibility and reliability for a wide variety of processes and production capacities. Combined modular compartments from our portfolio offer our customers bespoke solutions to merge high productivity with excellent washing results, with low water, energy, and chemical consumptions.

For a range of textiles, from heavy technical to highly sensitive elastic fabrics, any wet finishing process can be made continuously, such as:

- Preparation (de-oiling) washing before heat setting
- Washing after rotary or digital printing
- Pad-steam bleaching
- Washing after dyeing

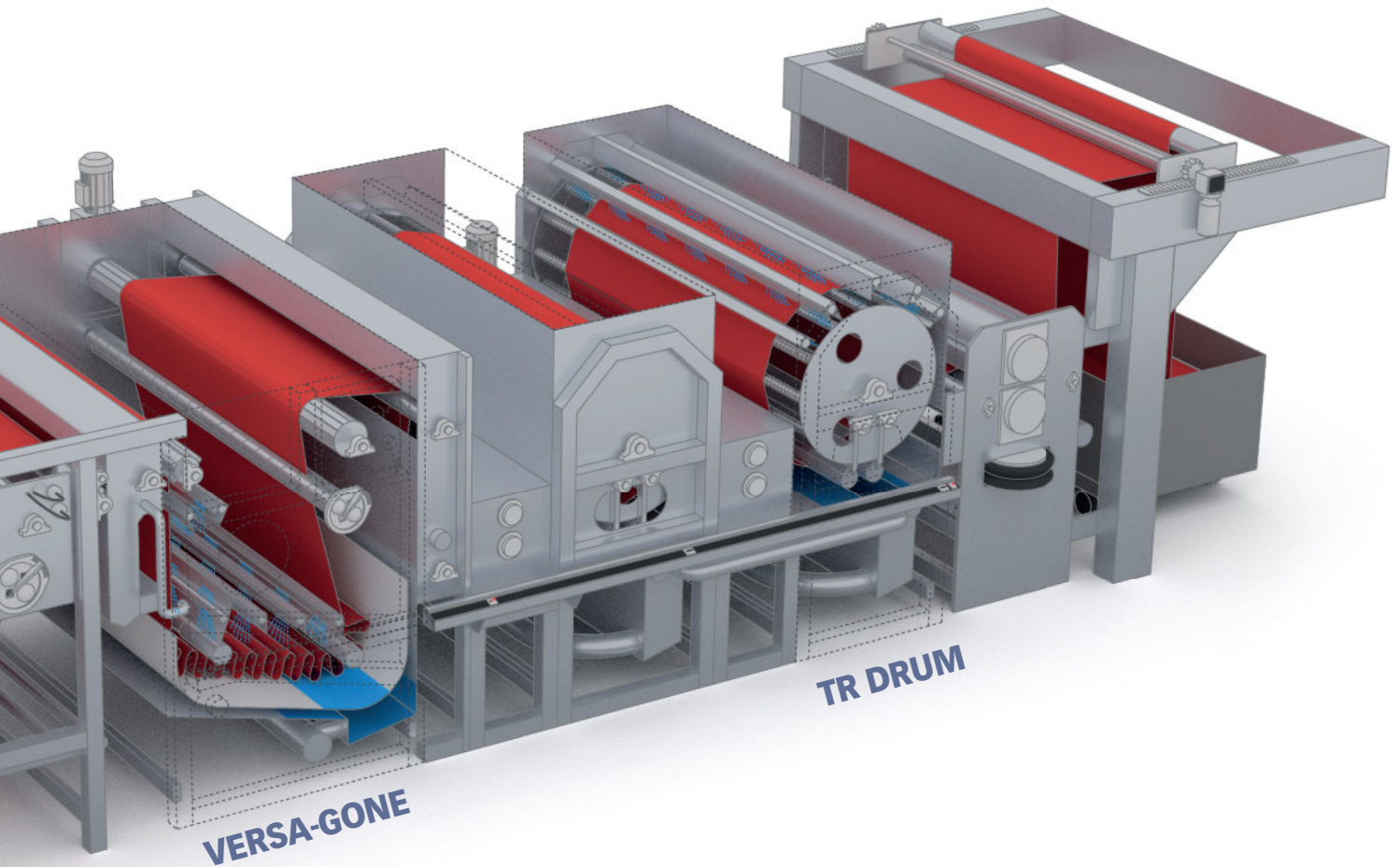


VERSA-GONE DWELLING COMPARTMENT

The Versa-Gone dwelling compartment offers relaxation, dwelling, and/or chemical reacting, with reproducible conditions and timing (in minutes and seconds).

The excellent bath renewal, high liquor flow, and dwell time achieve outstanding impregnation and washing effect.

For further flexibility, both, tight strand and plaited fabric transport, is possible.



TR DRUM WASHING COMPARTMENT

The drum washing compartment is designed for washing performance, while allowing for fully adjustable fabric-tension.

Outstanding washing performance is achieved by high flow of liquor, penetrating through the fabric. The reduced liquor volume in the compartment insures excellent bath renewal and temperature control.

A squeezing unit or vacuum system can be used for optimum bath separation between the washing stages.



VTR DOUBLE DRUM WASHING COMPARTMENT

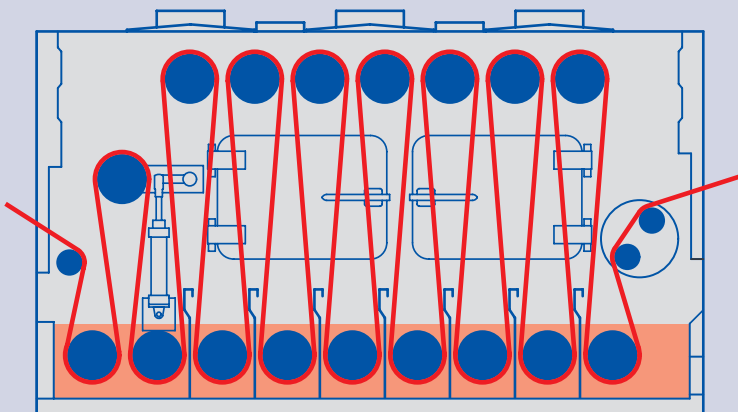
The VTR double drum washing compartment is designed for high performance washing on knit and woven products, achieving a high penetration wash through both sides of the fabric with adjustable tension.

Easy access for fabric threading and cleaning is made through side windows and top access.



RK ROLLER WASHING COMPARTMENT

The roller washing compartment RK completes the SCOUT Range portfolio. Mostly used for woven products, it is also offered with motorized rollers and tension control, making it adequate for knits fabrics too. The compartment is available in different sizes.



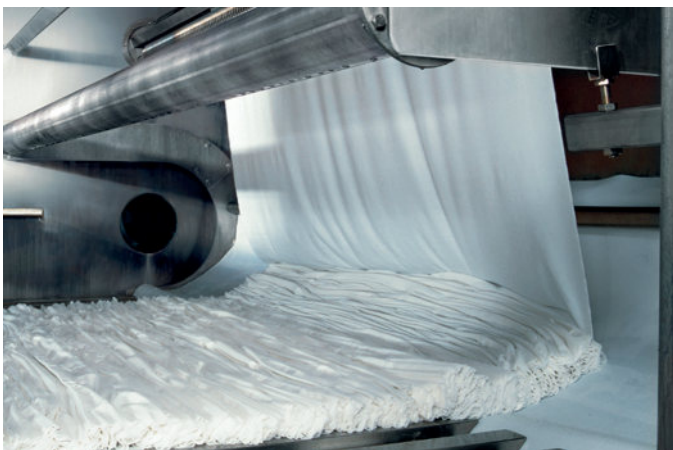
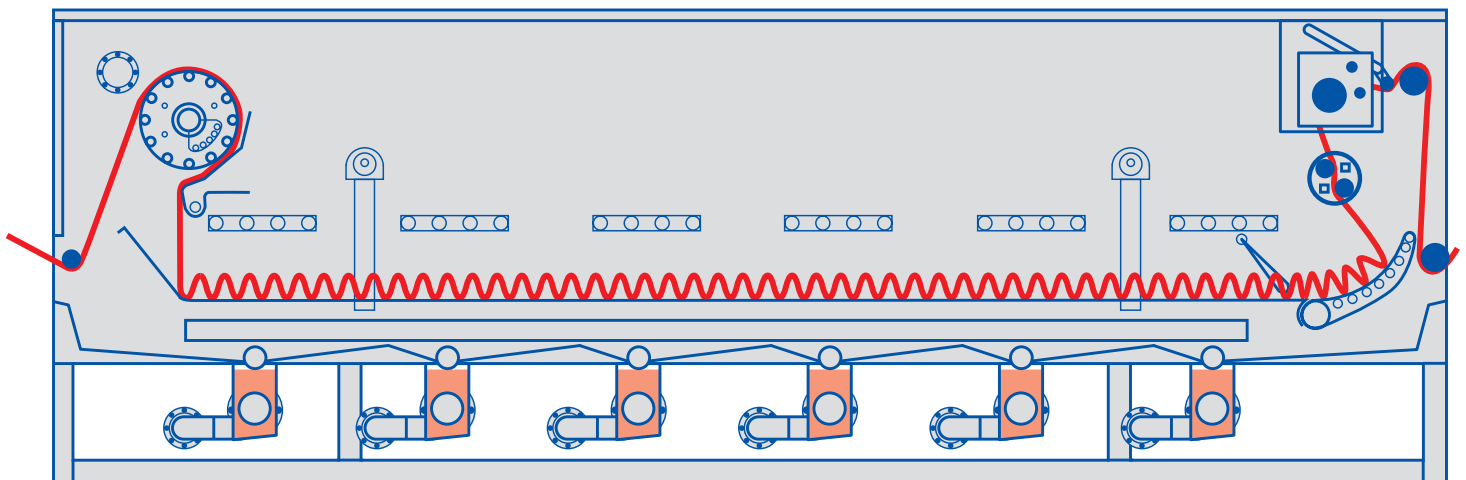
COMBINED PERCOWASH COMPARTMENT FOR WASHING AND STEAMING

The percowash compartment is a high dwell time module built to ensure thorough washing and/or steaming using a tensionless percolating transport table.



FASTNESS WASHING

An intense rain of 30.000 Liters/hour saturates and flows through the plaited down fabric under each step during 2 - 3 min.



PAD-STEAMING

Direct steam is injected directly on the fabric, heating up the product and the held liquor, and quickly improving capacity and efficiency of the steamer.

OBA COMPARTMENT

SCOUT Ranges are even more flexible and better utilized when combined with an Optical Brightener Applicator, producing high quality full white product with minimum switch over time.



SOFTENER APPLICATION

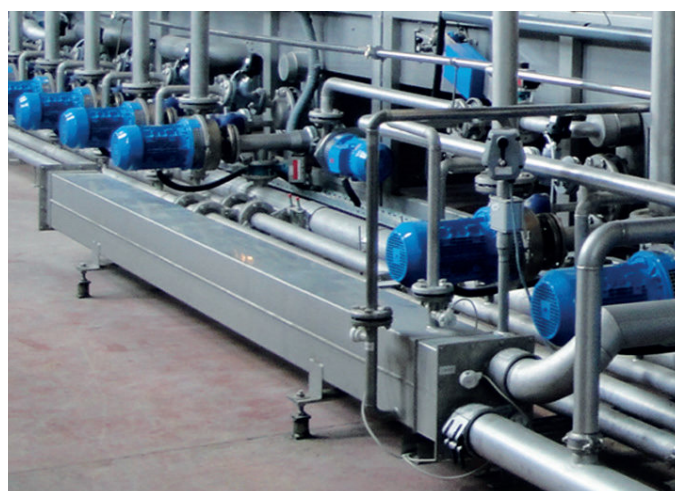
The SCOUT Nip Applicator is designed for precise and tailing free impregnation, with as little chemical waste as possible. Information on pick-up, impregnation humidity and consumption values can be collected. Including a wet-in-wet softener impregnation in line with the SCOUT Range improves efficiency.



HEAT RECOVERY SYSTEM

The compact heat recovery is used to heat fresh water flowing into the machine by means of waste heat.

The system is integrated into the machine, and energy saving data is collected by the process control.



PROCESS CONTROL

The SIEMENS based process control allows for the exact reproducibility of all processes, recipe management, and consumption data collection for the state-of-the-art textile factory.

The intuitive visualisation and controls make the operation of our ranges very easy, and reduces learning time. Online diagnosis and support is standard equipment.



DOSING UNITS

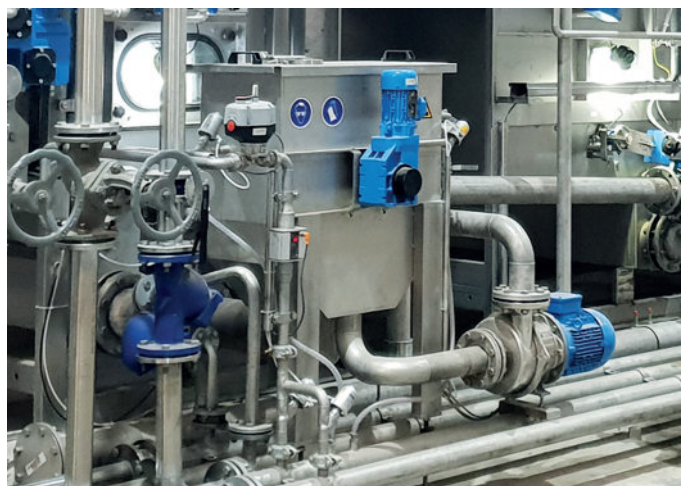
Dosing units are supplied according to the recipe's needs. Each chemical is dosed into the machine separately, with an independent pump providing the exact amount required for the process, also allowing to track consumption. Easy to use and calibrate, the dosing rounds up for a fully automatic textile solution.



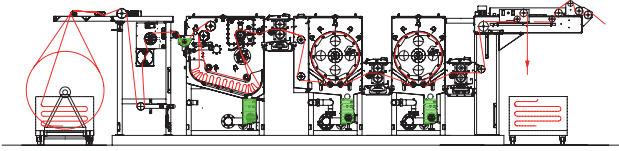
FILTERS

The low resistance filters are based on a self-cleaning and no-maintenance stainless steel mesh. They can be equipped to eliminate lint and dirt to any washing compartment.

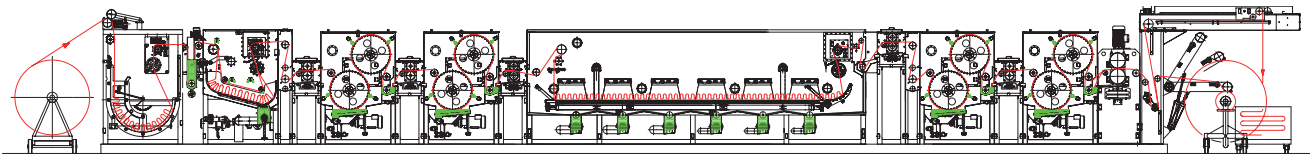
Please ask our sales team for advice.



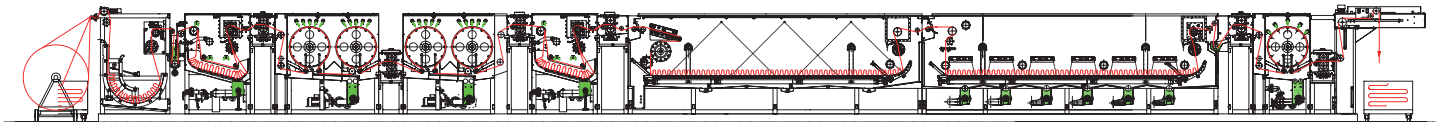
PREPARATION WASHING



WASHING AFTER DYEING AND PRINTING



PAD-STEAM BLEACHING



INLINE OBA FOR FULL WHITE BLEACHING

